

TAURUS

Bü Hyfire



The newest, incredibly powerful and easy to configure EN54-25 wireless system on the market today

Taurus is the new **Hyfire** wireless fire system technology. Based on **Hyfire's** consolidated experience in wireless fire protection, it is a totally new protocol, wireless network and range of high-performance detection, control and alarm devices.

With the **Hyfire** fire panel we deliver a uniquely powerful system solution for superior operation from installation to maintenance.

The new **TauREX software** provides the most simple and intuitive way to install, commission and maintain your Taurus system.

Taurus ensures unprecedented fire detection performance, application scale and superior reliability. The Taurus wireless platform can easily answer the needs of both small-medium or large sites, supporting up to 128 devices on a single translator.

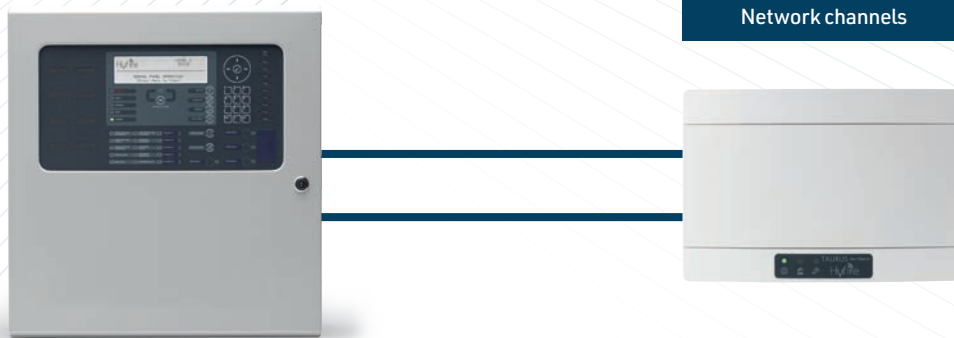
Intelligent signal processing across 60 communication channels coupled with our **Mesh Expander Technology** ensures exceptional system reliability in every environment.

Taurus is energy efficient and environmentally friendly thanks to an innovative electrical design that ensures our battery management is among the best available on the market.

The Taurus technology has the ability to integrate with different protocols and control equipment, operating also in hybrid mode.

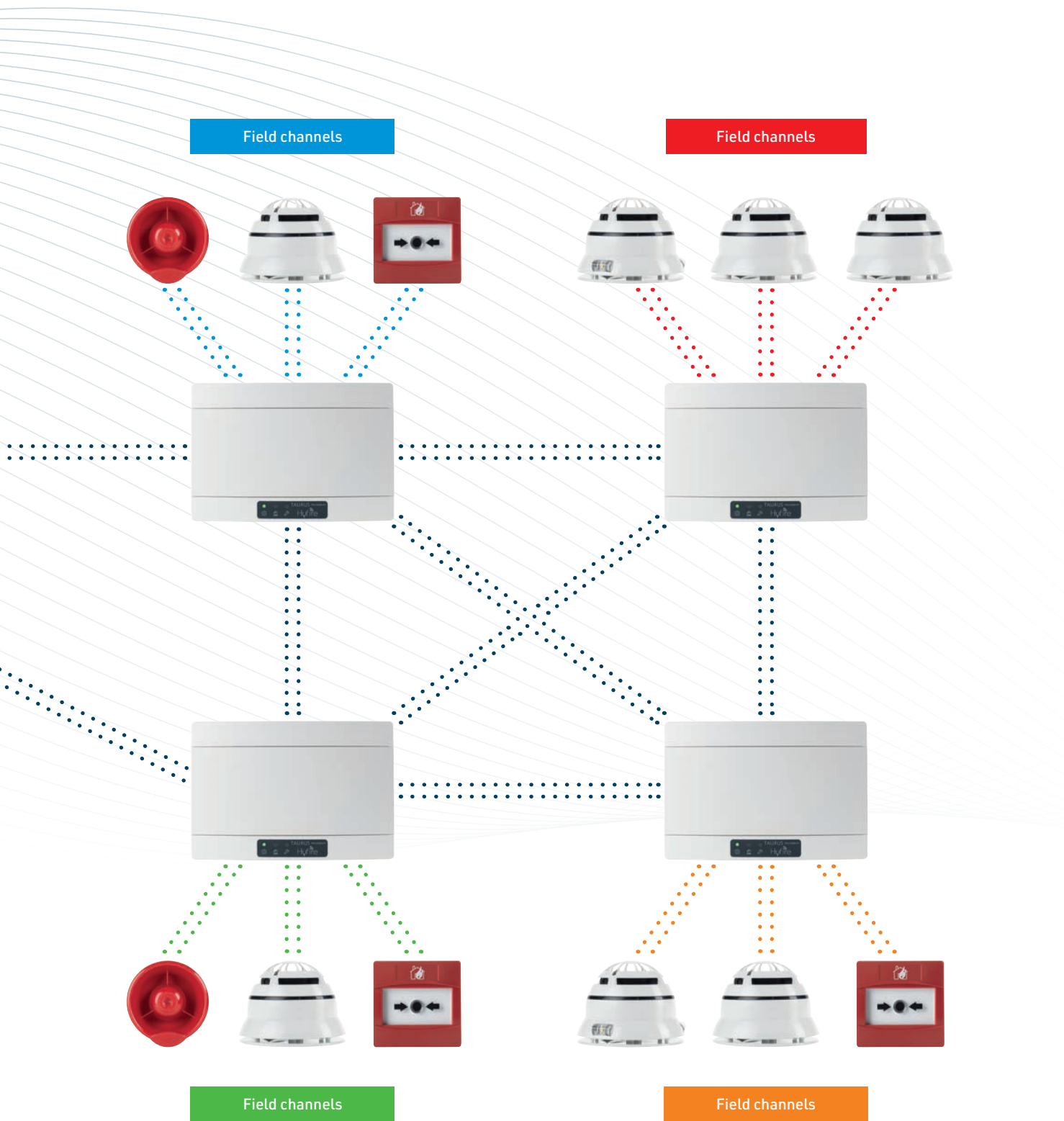


Taurus Wireless Technology



Key features:

- Seamless combination with the Hyfire control panel
- 60 communications channels (infrastructure and field devices)
- Scalable architecture, easy to expand from a single loop to multiple systems on the same site
- Up to 6 Translators per loop
- Up to 128 devices per wireless Translator
- Up to 240 devices per hybrid loop
- Mesh Expander Technology, up to 15 Expanders per Translator
- Up to 32 devices per Expander
- 8 expansion hops delivers over 8 km range from Translator to final device
- Dual channel redundancy
- 10 year battery life on inputs. 5 year battery life on outputs (including weekly test)
- Fully synchronised outputs with rapid reaction time
- Superior energy management using standard CR123A lithium batteries across the range
- TauREX, new user-friendly survey, installation, commissioning and maintenance software
- Superior field device performance



Hyfire Control Panel



Our ultra-reliable Hyfire control panel is optimised for the Taurus wireless technology. It delivers a uniquely powerful system solution for installers and end users from install to maintenance.

Hyfire panels protect end users, the public and our install partners with a proprietary protocol that guarantees lifetime performance from install to maintenance.

Available in one, two and four loop variants, with a full range of peripherals and options, our Hyfire panels are based on Advanced's famous MxPro 5 panel range, but with unique firmware and programming tools tuned to our new generation Taurus wireless range.

The Hyfire panel range makes it quick and easy to go from a small, one panel, one loop site with a small number of wireless devices, to a huge 200 panel networked site with complicated cause and effect across fully wireless or hybrid wireless and wired loops.

Remote monitoring and BMS integration within the Hyfire panel solution makes it the most attractive option on the market today, that redefines what is possible with wireless.

The Hyfire control panel is EN54-2 & -4 approved by FM Global.



Network Optimiser Technology

Super-scalable, ultra-reliable wireless

Taurus leaps beyond the performance of existing wireless systems with Hyfire's Network Optimiser communications technology.

Intelligent signal processing and 60 communications channels mean whatever the size of the building, or the overlap of wireless infrastructure within it, you will not suffer any channel collision.

The 60 communications channels are effectively divided by infrastructure and field channels so you can easily expand the system architecture from a single loop to multiple systems on the same site without any mutual influence.

As well as efficiently dividing channels, Network Optimiser also checks and confirms that every packet of data is sent and received as expected, ensuring absolute confidence in safety signalling.

Network Optimiser means Taurus fire systems can go further, larger, higher and use a wider range of devices. No site is too large or too challenging.

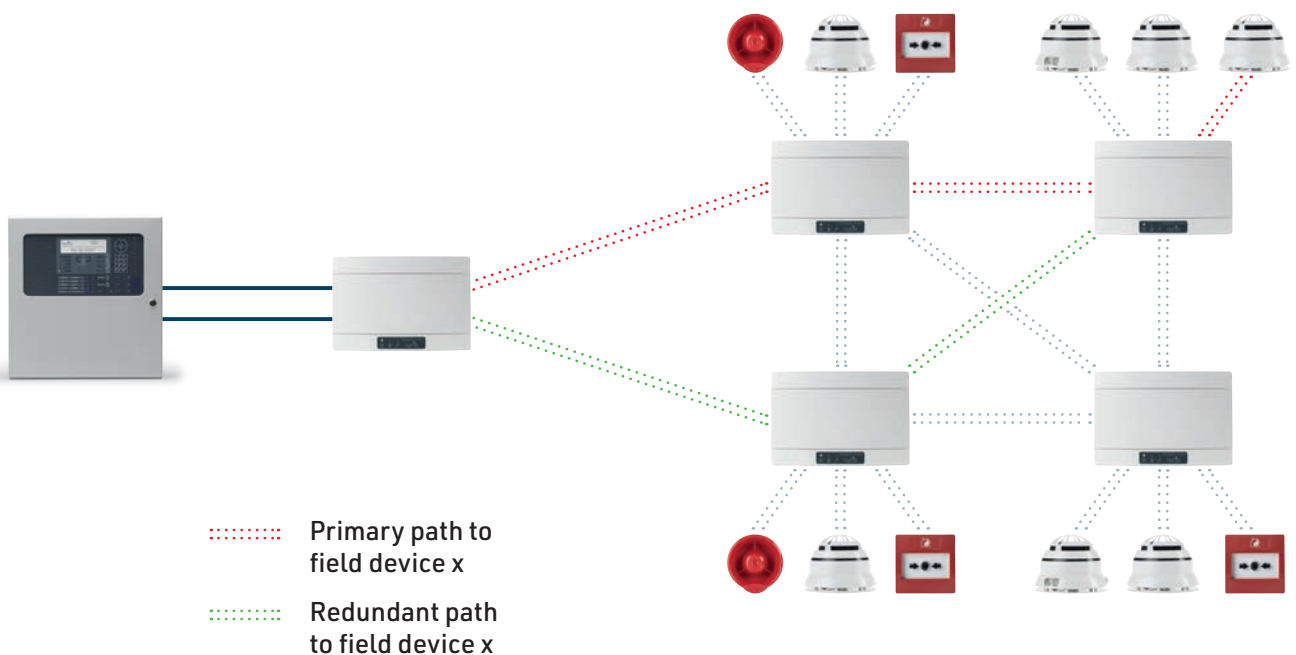


SafePath

Mesh Expander Technology

Taurus Expanders use our SafePath mesh expander technology to deliver unprecedented system reliability and performance. If any Expander in the chain fails, the transmission path finds an alternate route, ensuring communication continuity.

Every Taurus Translator supports up to 15 network expanders and the best possible redundant communication paths are identified and tested from the beginning, during system commissioning. This provides the most reliable and robust communication pathway possible, making Taurus an ultra-resilient wireless infrastructure.



SafeSwitch

Redundant Channel Technology

Our SafeSwitch dual redundant channel technology, applied to every Taurus device, Translator and Expander, ensures superior system reliability. If one channel is blocked, the other automatically takes over so that every message is correctly delivered when and where required.

Our wireless Translators and Expanders are all backup powered and watchdog restart protected, further enforcing our system's reliability.



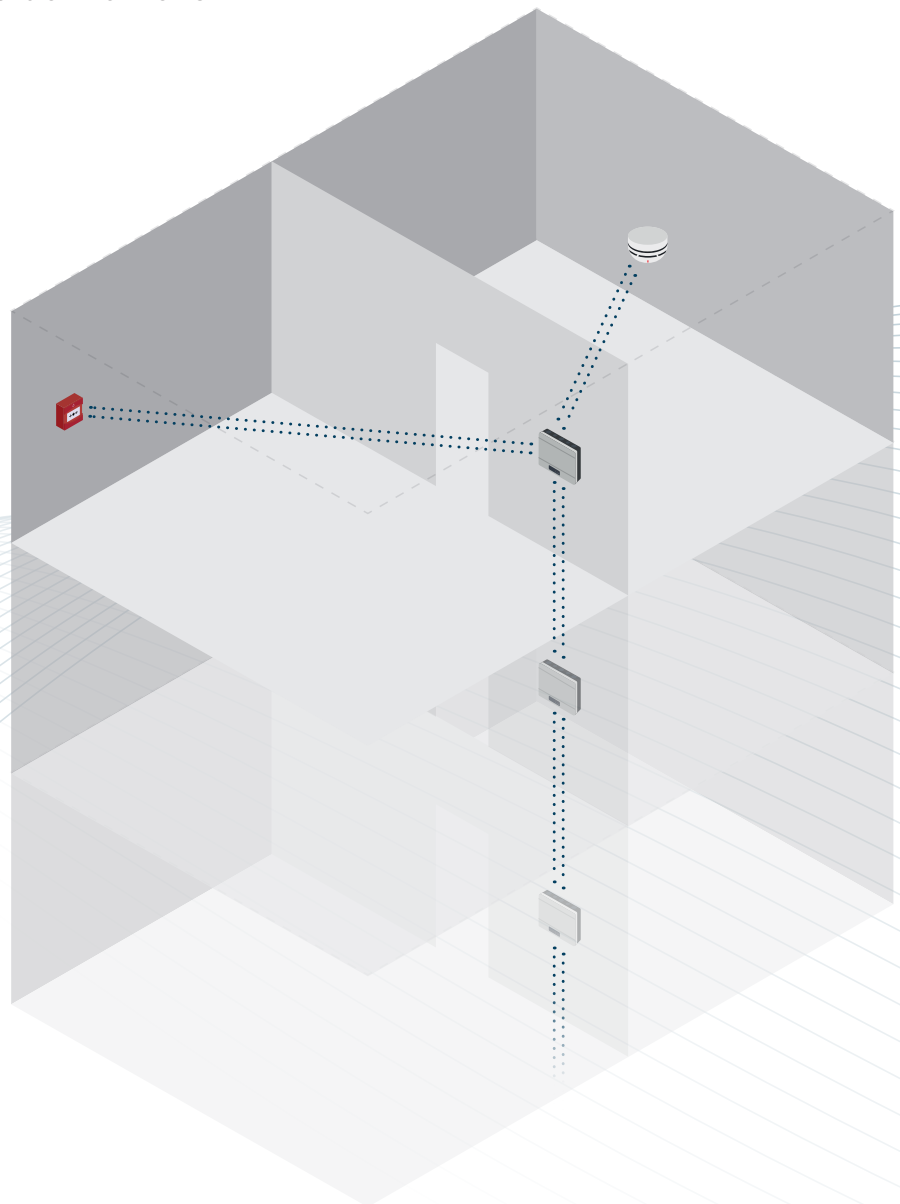
Pathfinder Technology

Infrastructure Range

Translators and Expanders have been optimised to deliver the perfect balance of range and confidence with a technology we call Pathfinder.

Point to point transmission range is over 1km in open air and our antenna technology is tuned for performance across frequencies and environments.

Combined with up to 8 expansion hops a Taurus system can cover well over 8km. Other systems rely on a huge amount of infrastructure and power to maintain range and safety, Taurus uses less equipment and less batteries.

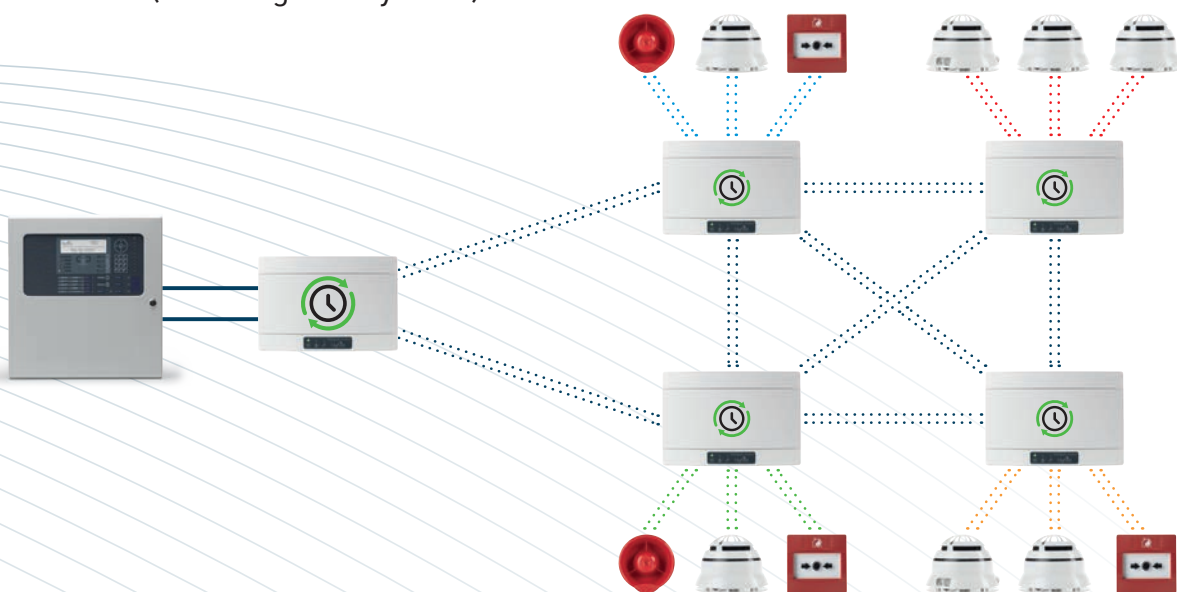


Optimised Power Management

Taurus achieves maximum performance with minimum environmental impact. Our communications technology ensures all devices communicate every second, and we don't waste power listening or transmitting unnecessarily. This alongside the robust electrical design, means our battery management is among the best available, with 10 year battery life for sensors, call points and inputs and up to 5 years for outputs, sounders and VADs (including weekly tests).

We use standard CR123A lithium batteries, available off the shelf worldwide and at ever improving technology, and of course the best battery life means less batteries.

A five year warranty and proven reliability that last years, means across the life of a system you're unlikely to need to change the devices, and with wireless you can easily reconfigure your system as your building or performance requirements change.



Taurus uses a synchronous communication protocol:

- Synchronised clock among the field and infrastructure devices
- Unique communication slot for each device to transmit and receive messages without conflicts with other equipment
- Flexible data exchange rate between infrastructure and field devices according to device status (normal/ alarm/fault)
- Longer battery life

TauREX Software: the easiest way to install, commission and maintain your Taurus fire system

Our new TauREX software provides a simple and intuitive way to configure your Taurus system. A full set of advanced functions is available for system set up, data acquisition, monitoring and reporting.

A user-friendly interface simplifies configuration, reduces install times and provides a clear and complete system overview for easy maintenance.

EasyScan

All Taurus products are scanned (via a QR code on the box or product) into the configuration tool's Virtual Warehouse, allowing super quick and accurate setup with no manual entry and massive time savings.



Drag&Drop

Use real system drawings in our programming tool and drop devices from the Virtual Warehouse straight onto floorplans. Easy setup and linkage of the devices together with associated signal quality display ensure your designs are accurate and your system fully functional in real time.

ConfigWizard

Once you've finished your design, use Taurus' configuration tool's wizard button to autolearn all your devices onto the system. The simplest and easiest large-scale wireless system programming available.

LiveDisplay

It provides access to a visual display of the system status, for easy control of all system devices in real time.



One Point Programming

With Taurus you do everything by wirelessly connecting to a Translator. No matter how many devices or how large your site, no more cables, no more walking, no more ladders. Install devices in discovery mode and you'll never need to see them until the next test.

TauREX Report

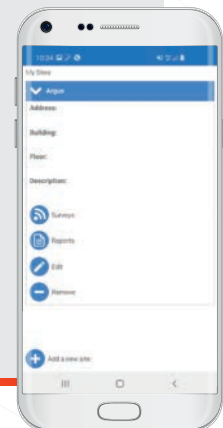
Effective reporting provides complete information about system status post commissioning, and compliance.

Easy fault finding

Taurus devices transmit a vast amount of data to the translator which when accessed live or via the logs gives rich diagnostic data for quick, simple resolution of any issues. No need to find and download from remote Expanders, everything is accessed from a Translator.

Survey Tool

The new Taurus survey tool is driven by a free app that works on your android device, downloadable from the Google Play Store. It makes surveys simple and accurate and automatically delivers and saves detailed reports to help with compliance and design. The new app allows you to manage your whole portfolio of sites and surveys.



SecureSync

Responsiveness

Taurus delivers fast-response with all output devices harmonised at the same time for clear sound and concurrent activation of interface modules, meaning when you really need to notify or evacuate, Taurus will always perform. It also means that resets, delays and false alarm management hush buttons will work quickly and easily.



The Key Advantages of Wireless Fire Systems

The Taurus technology is extremely easy to install and represents a cost-effective solution compared to traditional cabled systems.

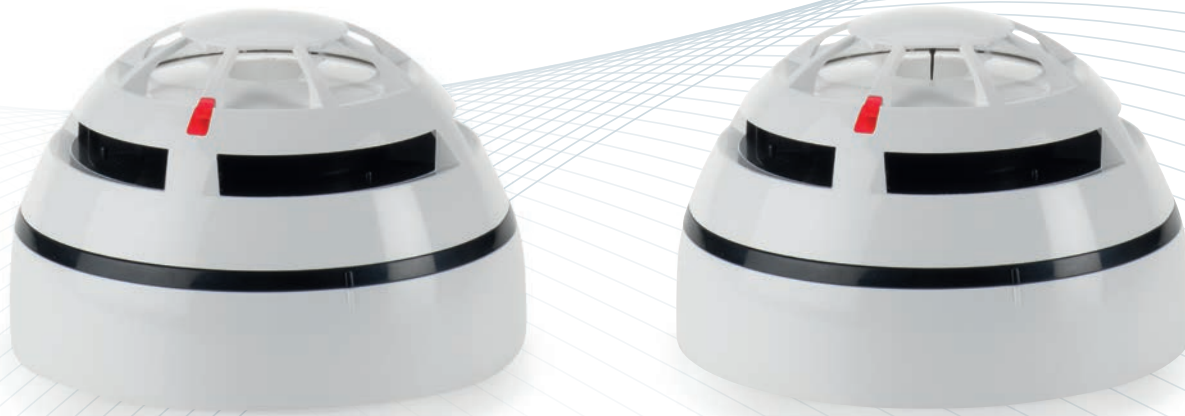
The Taurus wireless devices, eliminates the need for complex cable networks and all of the problems they can bring, allowing the installation to be completed in a very short time period – a few days and not weeks or months as for wired solutions – limiting time and direct contact on site, minimizing the disturbance for tenants and disruption to site. The system survey defines exactly the wireless infrastructure required, so equipment costs are guaranteed and fixed. The devices can be pre-programmed quickly and easily off site contributing to increase the speed of installation and reducing the people required to install. Project costs are optimized and deadlines almost guaranteed.



Wireless fire systems require robust EN54-25 approved wireless infrastructure and fully EN54 approved sensing, control and alarm products. The Taurus product line, fully certified to the relevant EN54 standards, offers the highest performing range of fire sensing and notification technology available.



Detection Devices



Hyfire Taurus Optical Detector

Dual optical smoke detection with smart algorithms and three sensitivity mode settings delivers unparalleled performance across a range of smoke types, and the best false alarm rejection across a wide range of environments.

Advanced optical chamber design ensures high optical performance while a reverse ingress dust trap makes our optical sensors the most contaminant resistant on the market, for better performance and less maintenance.

Our dual channel optical smoke detector is unique amongst wireless fire detectors.

Available also in black plastic.

EN54-7, EN54-25 approved.

Hyfire Taurus Multi-Sensor Detector

The Taurus product line includes one of the very few multi-sensor detectors available on a wireless fire system.

It combines our smart algorithms and dual optical sensing with A1R heat sensing.

Available also in black plastic.

EN54-7, EN54-5, EN54-25 approved.



Hyfire Taurus Heat Detector

Our wireless heat detector is a high performance unit with A1R rate of rise or BS static profile, programmable from one device for reduced inventory.

Available also in black plastic.

EN54-5, EN54-25 approved.



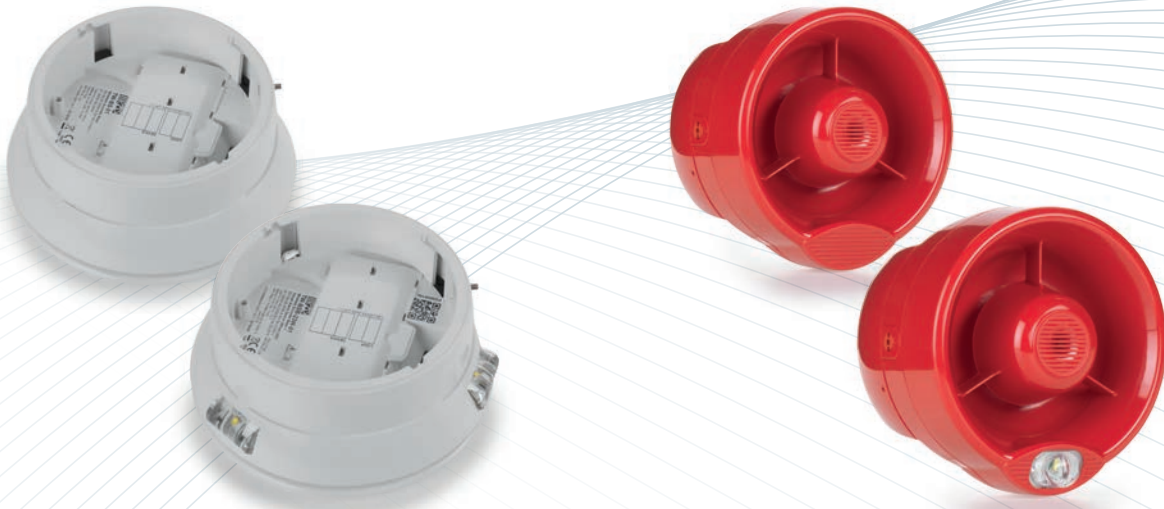
Hyfire Taurus Manual Call Point

Designed for clear notification and easy installation, our wireless MCP has quick and simple resets with clear signal flags.

A led light allows the alarm condition to be viewed over a wide angle. Without the need of screws or any tools the front operating element snaps into place by simply pressing it, for an easy installation.

EN54-11 and EN54-25 approved.

Alarm and Warning Devices



Hyfire Taurus Sounder Base/Sounder VAD Base (Red or White Flash)

Our EN54-3, EN54-23 and EN54-25 wireless ceiling sounder and sounder VAD range has been designed for simplicity and performance. Base sounders and sounder beacons can be used without a detection device, and with a blanking cap.

Both devices can be tuned to their location with programmable volume level, coverage areas and a wide range of tones.

Available also in black plastic.

Hyfire Taurus wireless, waterproof wall sounder/sounder VAD

Our EN54-3, EN54-23 wireless wall sounder and sounder beacon range has been designed to offer quick, flexible installs in any environment.

The housing is waterproof rated and so suitable for interior or exterior installation.

Available in white or red plastic.

Modules



Hyfire Taurus Input Module

The Input Module is fully supervised for alarm and fault conditions. It is engineered to deliver 10 year battery life and designed for simple integration of third party equipment. It ensures the highest levels of life safety and system reliability.

EN54-18, EN54-25 approved.

Hyfire Taurus Output Module

The Output Module has been designed to allow easy control of a variety of third party equipment including access control doors, ventilation plant and fire extinguishing systems.

Output circuits are fully supervised for fault conditions. The output is capable of supplying power for operating low current third party equipment directly from the internal batteries.

EN54-18, EN54-25 approved.

Translator and Expander Modules



Hyfire Taurus Translator Module

The Taurus wireless translator creates our unique wireless infrastructure and manages protocol communications with the Hyfire panels.

Up to 128 devices can be attached to a single Translator allowing wireless coverage to scale in ways not possible before.

Our PassProtect technology allows to lock the translator with a password, preventing the risk of unauthorized access.

Available also in black plastic.

EN54-17, EN54-18, EN54-25 approved.

Hyfire Taurus Expander Module

Our Expanders allow the wireless network to scale, they extend the range and stability of the network by up to 1km and offer mesh expander technology to ensure communication continuity in the event of a failure.

Available also in black plastic.

EN54-18, EN54-25 approved.

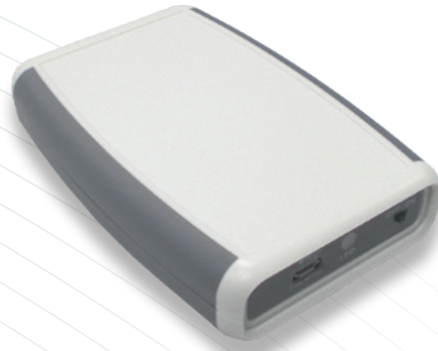
Other Products



Hyfire Taurus Remote Indicator

The Remote Indicator is a low profile unit with a large red LED panel, which can be used to indicate a variety of events or alarms on the fire system.

The device is ideal for indicating the activation of a detector which is located where visual alarm confirmation is difficult, such as a lift shaft, ceiling void or locked room. Indication of the operation of other part of the fire system is also possible



Hyfire Taurus Connect Dongle

The dongle device allows the user to wirelessly connect the PC to the translator for system management purposes (commissioning, debugging and diagnostic).

The device is compact and easily portable, it fits the pocket. The device is powered by usb cable once connected to the pc or by the two onboard batteries.

Flexible solution for any type of building

The Taurus products are engineered to provide outstanding performance with a high level of efficiency in all types of installation, regardless of the age, usage or construction of the building in question.

Our wireless technology is flexible and unobtrusive, easy to adapt to different configurations.

Thick walls, multiple building levels, uncertain condition of construction are no more difficult challenges: with no need for complex cable networks the installation can be completed in hours, not weeks, with less disruption to buildings.

- Commercial Properties
- Residential Buildings
- Highrise Buildings
- Healthcare and Education
- Hospitality and Catering Facilities
- Public and Government Buildings
- Schools and Universities
- Historic and Landmark Buildings
- Temporary Event Sites



Hyfire – Trusted Wireless Protection

Hyfire is a market leader in wireless and hybrid active fire protection systems. Founded ten years ago, Hyfire assisted in developing and bringing to market high performance wireless fire systems and since then they became a respected fire protection solution used on almost any site, large or small.

Hyfire wireless technology enables a new way of working, making our partners successful, different and expert. It is faster and less disruptive, needs fewer staff on site, minimises disturbance to end user business or activity, guarantees no surprises and delivers project deadlines and budgets with no overruns.

Our Hyfire partner programme ensures that end users and specifiers have access to an extensive network of fully trained installation professionals wherever they are, providing expert, local support for the best wireless and hybrid fire protection.

Our expert technical sales team ensure that business, specification and expertise are available when and where needed and our industry-leading training, technical support and service, always free to customers, ensures that partners and clients take advantage of the unique benefits of Hyfire wireless quickly and easily.

Our new generation of high-performance panels and wireless technology are now available, and further cement our reputation for performance and ease-of-use. We're committed to maintaining our leadership in Wireless Protection.

We are part of Halma plc, one of the largest and most successful companies in Europe with a purpose to deliver a safer, cleaner and healthier world for everyone, every day. Halma works globally across three main areas: safety, health and environmental technologies.



KM 610848





TAURUS

By Hyfire

Johannesburg - Cussonia Park,
3 Ridge Road, Laser Park,
Johannesburg, 2170

T: +27 (0)11 794 9144

E: info@technoswitch.co.za

W: www.hyfirewireless.com/za